

## OpenSUSE: samba problema de acessibilidade resolvido

- Digamos que a máquina Windows esteja em 192.168.1.6
- Acessar via smb://192.168.1.6 – **inicialmente, é impossível!!**

### ► Através do YAST: Setor:: Firewall

1) Por enquanto, DESLIGAR O FIREWALL (depois ver o que pode ligar, mantendo o samba acessando Windows);

2)

The screenshot shows the YaST Firewall configuration window. The 'home' zone is selected in the 'Zonas' list. In the 'Permitido' (Allowed) section, the 'samba-dc' service is highlighted. A blue arrow points from the 'home' zone to the 'samba-dc' service. Another blue arrow points from the 'samba-dc' service to the 'Adicionar ->' button. A green arrow points from the 'samba-dc' service to the 'ACHAR samba-dc' text. The 'ACHAR samba-dc' text is underlined and has a green dashed arrow pointing down to the 'Adicionar ->' button. The 'Adicionar ->' button is highlighted in green. The 'Permitido' list contains: dhcpv6-client, mdns, samba-client, samba-dc, and ssh. The 'Adicionar ->' button is highlighted in green. The 'Adicionar Todos ->' button is below it. The '- Remove' button is below that. The '- Remove Todos' button is at the bottom. The 'Ajuda' button is at the bottom left. The 'Cancelar' and 'Aceitar' buttons are at the bottom right.

## OpenSUSE: samba – solving the accessibility problem

- Let's say the Windows machine is on 192.168.1.6
- To access via smb: //192.168.1.6 – Is initially impossible!!

Artur Sá Menezes

### Using Yast: Firewall section

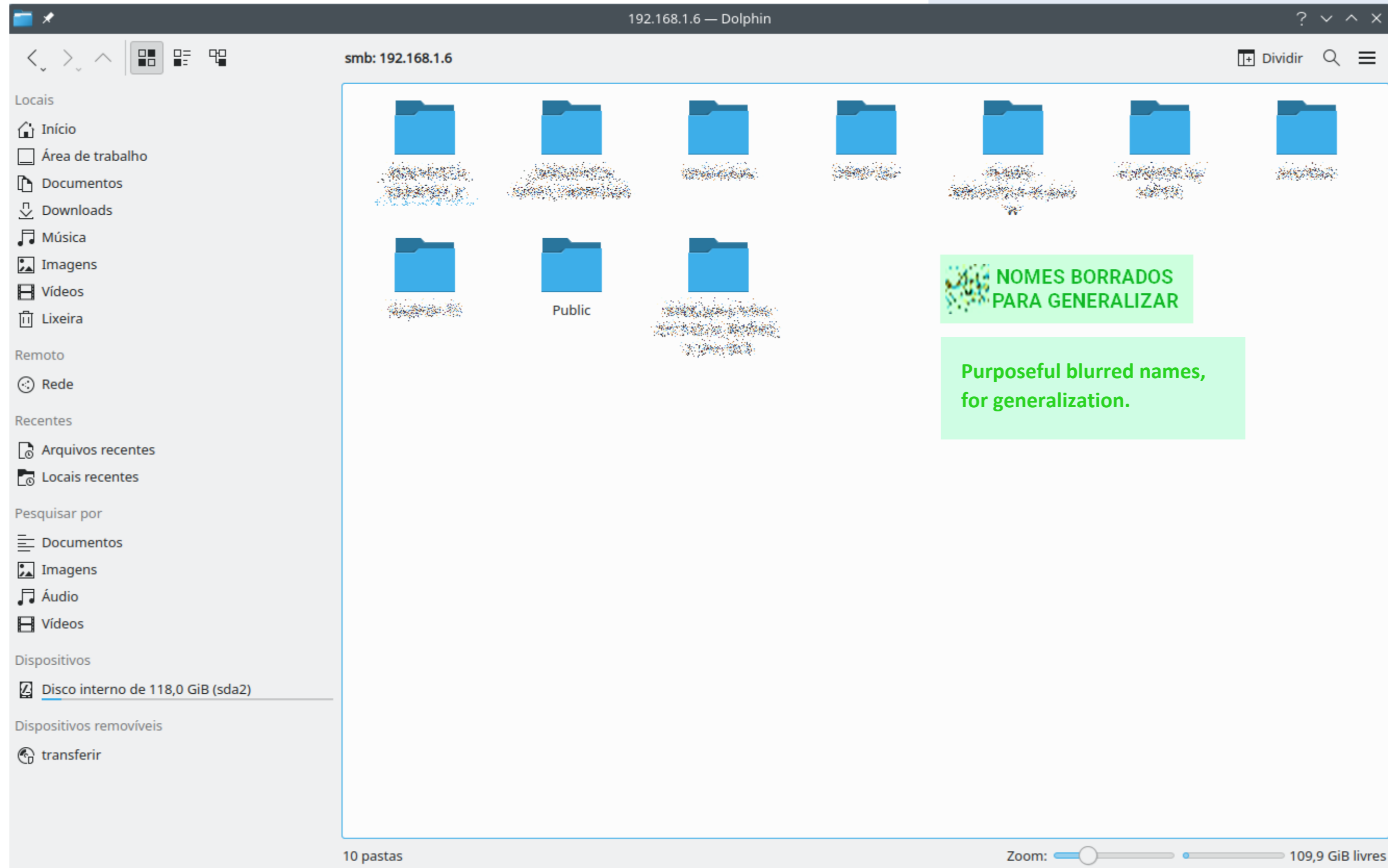
- For now, **turn off the firewall** (then see what you can turn on (after this), keeping the samba working with Microsoft Windows.

Mais nada, para o momento, considerando o que foi dito em (1): Ou seja, depois você vai fechando o Firewall.

Nothing more, for this moment, considering what has been said in (1): That is, then you will close the firewall.

Windows access example, after the procedure:

Exemplo de acesso ao Windows, depois do procedimento:



FIM (The End)